



PRODUCT SPECIFICATION

PART NUMBER & MODEL:

103385 DL-DM1850-6U

DESCRIPTION:

DOC SPECIFICATION PRODUCT TOUCH DISPLAY MONITOR

VERSION:

1.0

Customer Name

Customer Approval

Date

Table of Content

1	<i>Cautions and Warnings</i> _____	4
2	<i>Introduction</i> _____	4
3	<i>Dimension Drawings</i> _____	6
3.1	Dimension Drawing 103385 DL-DM1850-6U _____	6
4	<i>Specification Summary</i> _____	8
5	<i>Connectors & Cables</i> _____	10
5.1	Power _____	10
5.2	Display Port _____	11
5.3	USB Type-C _____	12
5.4	Display Port Cable _____	Error! Bookmark not defined.
5.5	USB Type-C to Type-A Cable _____	Error! Bookmark not defined.
6	<i>Product Label</i> _____	13
6.1	Label _____	13
6.1.1	Position and Artwork _____	13
6.1.2	Serial Number Coding _____	13
6.1.3	Manufacturing Date _____	13
7	<i>Display Port and USB Cable (Optional)</i> _____	14
8	<i>Packaging Specification</i> _____	19
8.1	Product Box _____	19
8.2	Shipping Box _____	19
8.3	Shipping Label _____	19
8.3.1	Position: _____	19
8.3.2	Artwork: _____	20
9	<i>Quality</i> _____	21
9.1	Environmental Conditions _____	21
9.2	Precautions using Products with LCD Modules _____	21
9.2.1	Safety & Health _____	21
9.2.2	Operation Caution _____	21
9.2.3	Cleaning of the Display Module _____	21
9.2.4	Storage precautions _____	21
9.2.5	Transportation Precautions _____	21
10	<i>Warranty</i> _____	22
11	<i>Intellectual Property, Copyright and Trademark</i> _____	22
12	<i>Contact Information</i> _____	23

1 Cautions and Warnings

WARNING!

Do not apply a power supply voltage above 36V.

Do not open the device.

**If device shows any sign of damage, do not connect power and return device to DLOGIC for service.
If the equipment is used in a manner not specified by the manufacturer, the protection provided by the equipment may be impaired.**

2 Introduction

The DLOGIC family of Monitors is designed for the industrial, marine, manufacturing, medical, pharmaceutical, and harsh environments.

The DLOGIC monitors are carefully designed for high performance, simplicity, reliability, and long life. Interfaces provided support the latest generation of computers with Display Port and USB for the touch interface.

The IPS screen has excellent colors and ultra-wide viewing angles and is equipped with a 1000 cd/m² long-life high brightness backlight.

The monitor is controlled via the AUX channel command interface (DDC/CI), giving the application software full control of configuration such as brightness and configuration settings.

A underglass + and – and off button is available to manually control the brightness of the screen. If not needed the buttons can be disabled.

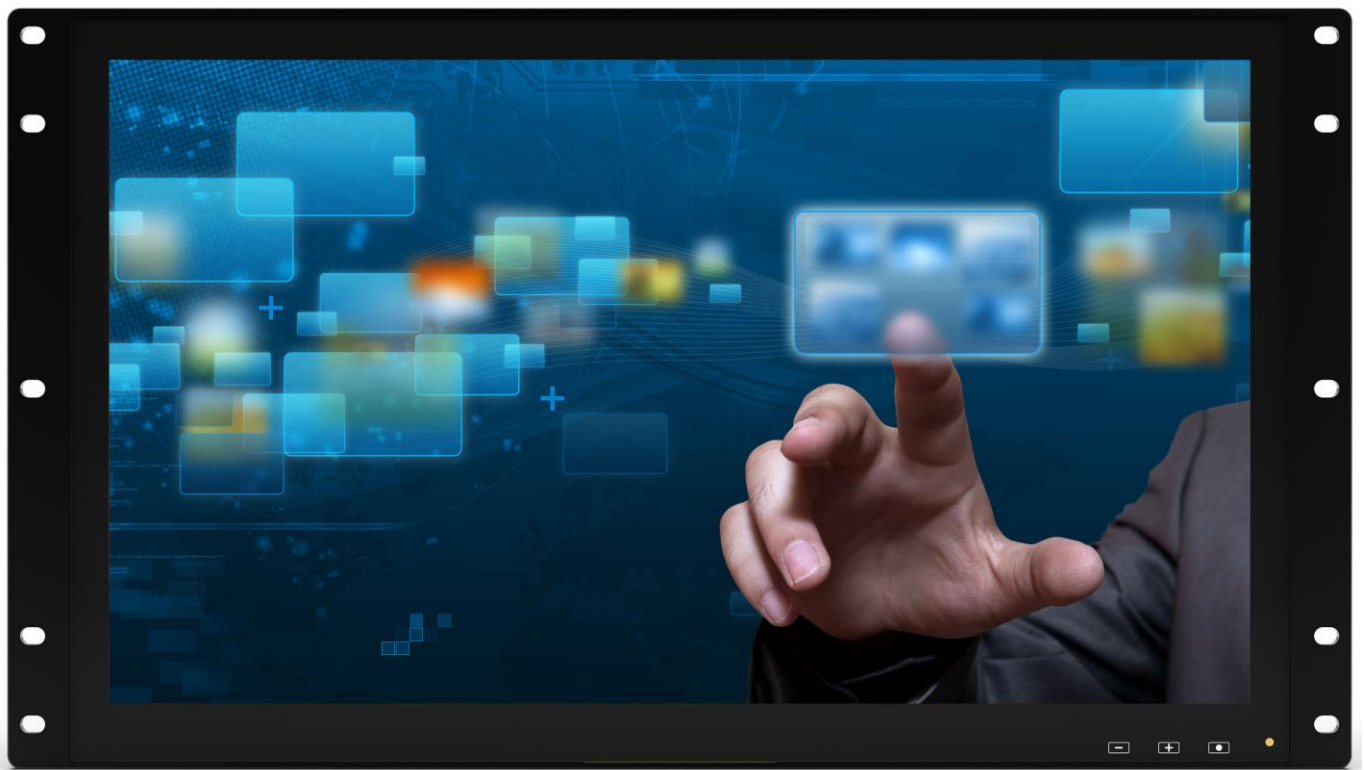
The monitor has a unibody aluminium frame which protects the screen and provides an elegant modern look to the monitor. The flat backside of the panel makes it easy to install the monitor in many different consoles. Further the monitor has VESA FDMI 100x100mm or 200x100mm compliant mounting positions with M4x10mm screws.

The cover glass is a 1.8mm chemically strengthened low reflection Glass that provides solid protection for the monitor.

State-of-the-art multitouch panel with Adaptive Sensing technology. Adaptive sensing technology is highly resistant to moisture. Differential touch sensing delivers unparalleled noise immunity ensuring superior touch performance even in a harsh environment.

Key features:

- Industrial Grade IPS Display Panel with a resolution of 1920x1080.
- 1000 cd/m² high brightness backlight with 80000 hours life.
- High-resolution capacitive multitouch panel with state-of-the-art Microchip mXT2952TD Touch Controller.
- Optically bonded Display and Touch Panel to reduce internal reflection, improve sunlight readability and prevent dust and moisture from entering the optical assembly.
- Chemically hardened 1.8mm low reflection Cover Glass
- Power input from 18-36Vdc
- Display port display interface and USB touch interface for the newest generation of Computers.
- Brightness control through the Display Port AUX DDC channel.



DL-DM1850-6U Front View



DL-DM1850-6U Rear View

3 Dimension Drawings

3.1 Dimension Drawing 103385 DL-DM1850-6U

4 Specification Summary

Display Interface

Display Port	Display Port Version 1.2
---------------------	--------------------------

Display DL-DM1850-6U

Display Size	IPS 18.5-inch
Resolution	1920x1080
Brightness	1000 cd/m ²
Colors	16.7 million
Viewing Angle	+/- 89 deg. (typical) (Up/Down, Left/Right)
Aspect Ratio	16:9
Pixel Pitch	0.213 (H) x 0.213 (V)
Response Time	14ms (typical)
Contrast	1000:1 (typical)
Dimensions	444mm x 274mm, Display Panel T=20.1mm, including electronics T=41mm
Input Voltage	18 – 36VDC
Power max.	30W
Net unit weight	8.1 kg

Touch Interface

Touch Screen Type	Projected Capacitive Multi-Touch Panel
Fingers supported	10 fingers

Cover Glass

Glass	1.8mm
Surface	Chemically hardened and anti-glare treatment

Housing

Housing	Aluminium UNS A384.0 (ADC12)
Electronic Cover	Aluminium UNS A96061
Side Panel	Chi Mei PC-681U (a)(f1), UL94, Rated V-0, 90°C, UL746C
Steel Reinforcement Panel	Stainless Steel UNS S30400

UL Material information

Double Sided Tape	3M VHB Tape RP16, Thickness 0.4mm, UL QOQW2.MH17478 RP16
PCB Material	UL796, Rated V-0, 105°C
Label Material	YUPO FPG80, Synthetic Paper

Environmental

Operating Temperature	-20 to 70 degC.
Storage Temperature	-20 to 70 degC.
Humidity	Up to 95%
IP Rating	Protection: IP66 front, IP42 rear, EN60529

Mean Time Between Failure (MTBF)

MTBF	50,000 hours
-------------	--------------

Condition:	A failure is anything that causes the product not to function to its specification. Reduction of brightness due to backlight life is not included as failure. The MTBF is to be measured using the actual system.
-------------------	---

Compliance

CE EMC Test & Measurement	IEC 61326-1: 2021
--------------------------------------	-------------------

CE EMC ITE & Multimedia	EN55032:2015 +A1:2022, EN55035: 2017 +A11: 2020
------------------------------------	---

CE LVD	IEC 62368-1: 2018
---------------	-------------------

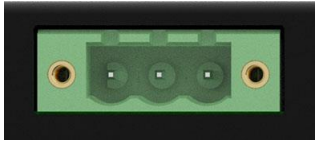

FCC	FCC CRF Title 47 Part 15 Subpart B – Section 15.107 and 15.109, Class B
------------	---

	ANSI C63.4-2014
--	-----------------

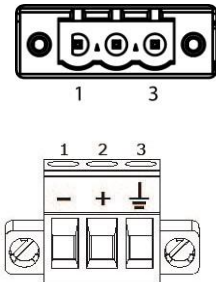
ICES	IC Regulation ICES-003: Issue 6
-------------	---------------------------------

5 Connectors & Cables

5.1 Power



	Manufacturer:	Part Number:
PCB Connector:	Phoenix Contact	1776511, MSTB 2,5/ 3-GF-5,08
		
Cable Connector:	Phoenix Contact	1777992, MSTB 2,5/ 3-STF-5,08

Connector Specification:	
Voltage rating:	320V AC, DC
Current rating:	12.0A AC, DC (AWG12)
Mechanical:	Secure locking mechanism with screws
	Mechanical prevention from inverse insertion

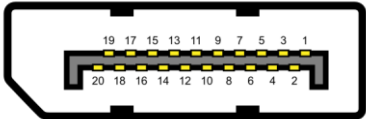
Pin:	Signal Name:	Function:	
1	GND	Ground	
2	24V	24Vdc	
3	SHIELD	Shield Ground	

UL, CSA, VDE:	UL Recognized E60425-19931011, CSA Certified LR13631-2585950, VDE 40050694
---------------	--



5.2 Display Port

	Manufacturer:	Part Number:
PCB Connector:	Industry Standard	Display Port Standard Type
		
Cable Connector:	Industry Standard	Display Port HBR2 or better

Connector Specification:	
Voltage rating:	40V AC, DC
Current rating:	0.5A AC, DC
Mechanical:	Friction locking connector and mechanical latch
	Mechanical prevention from inverse insertion

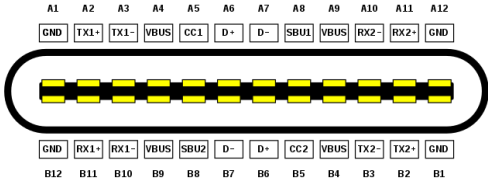
Pin:	Signal Name:	Description:	
1	ML_Lane 3 (n)	Lane 3	
2	GND		
3	ML_Lane 3 (p)		
4	ML_Lane 2 (n)	Lane 2	
5	GND		
6	ML_Lane 2 (p)		
7	ML_Lane 1 (n)	Lane 1	
8	GND		
9	ML_Lane 1 (p)		
10	ML_Lane 0 (n)	Lane 0	
11	GND		
12	ML_Lane 0 (p)		
13	Config 1	Connected to ground	
14	Config 2	Connected to ground	
15	AUX CH (p)	Auxiliary Channel	
16	GND	Ground	
17	AUX CH (n)	Auxiliary Channel	
18	Hot Plug Detect	Hot plug detection	
19	Return DP_PWR	Return for power	
20	DP_PWR	Power for connector 3.3V, 500mA	

5.3 USB Type-C

	Manufacturer:	Part Number:
PCB Connector:	Industry Standard	USB Type-C
		
Cable Connector:	Industry Standard	USB Type-C to USB Type A Cable

Connector Specification:	
Voltage rating:	100V AC, DC
Current rating:	3.0A AC, DC
Mechanical:	Friction locking connector
	Can be inserted in two directions

Pin:	Signal Name:	Description:
A1	GND	Ground return
A2		N.C.
A3		N.C.
A4	VBUS	Bus Power 5V
A5		N.C.
A6	D1+	USB 2.0 D+
A7	D1-	USB 2.0 D-
A8		N.C.
A9	VBUS	Bus Power 5V
A10		N.C.
A11		N.C.
A12	GND	Ground return
B12	GND	Ground return
B11		N.C.
B10		N.C.
B9	VBUS	Bus Power 5V
B8		N.C.
B7	D2-	USB 2.0 D-
B6	D2+	USB 2.0 D+
B5		N.C.
B4	VBUS	Bus Power 5V
B3		N.C.
B2		N.C.
B1	GND	Ground return




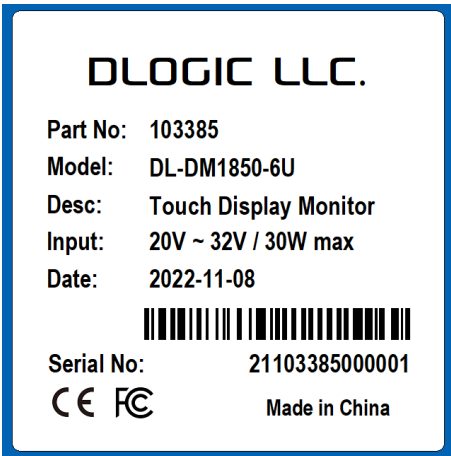
6 Product Label

6.1 Label

Label:	Description:
Size	50mm x 55mm, rounded corners, T=0.15mm
Material	YUPOTACK, SGS 60, Water proof, tear resistant
Color	Light Gray

6.1.1 Position and Artwork

The label is placed on the lower right corner of the display housing.

Label Position	Label Artwork
	

6.1.2 Serial Number Coding

Message Header, Serial Number Identifier:	21
Part Number (last 4 digits):	103385
Product Number:	000001 to 999999
Code Type:	Code 128

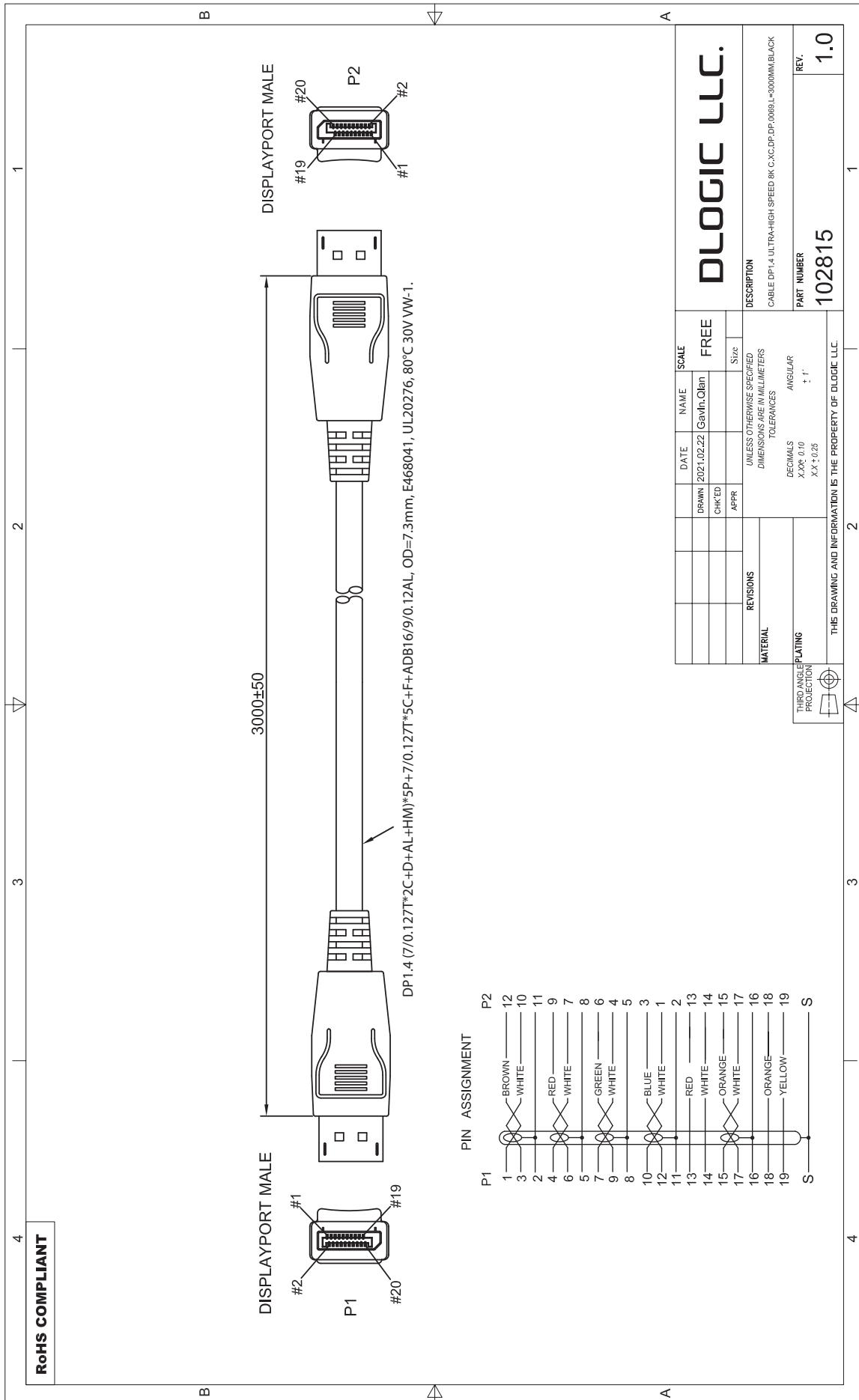
6.1.3 Manufacturing Date

Message Header	Mfg. Date
Date:	YYYY-MM-DD

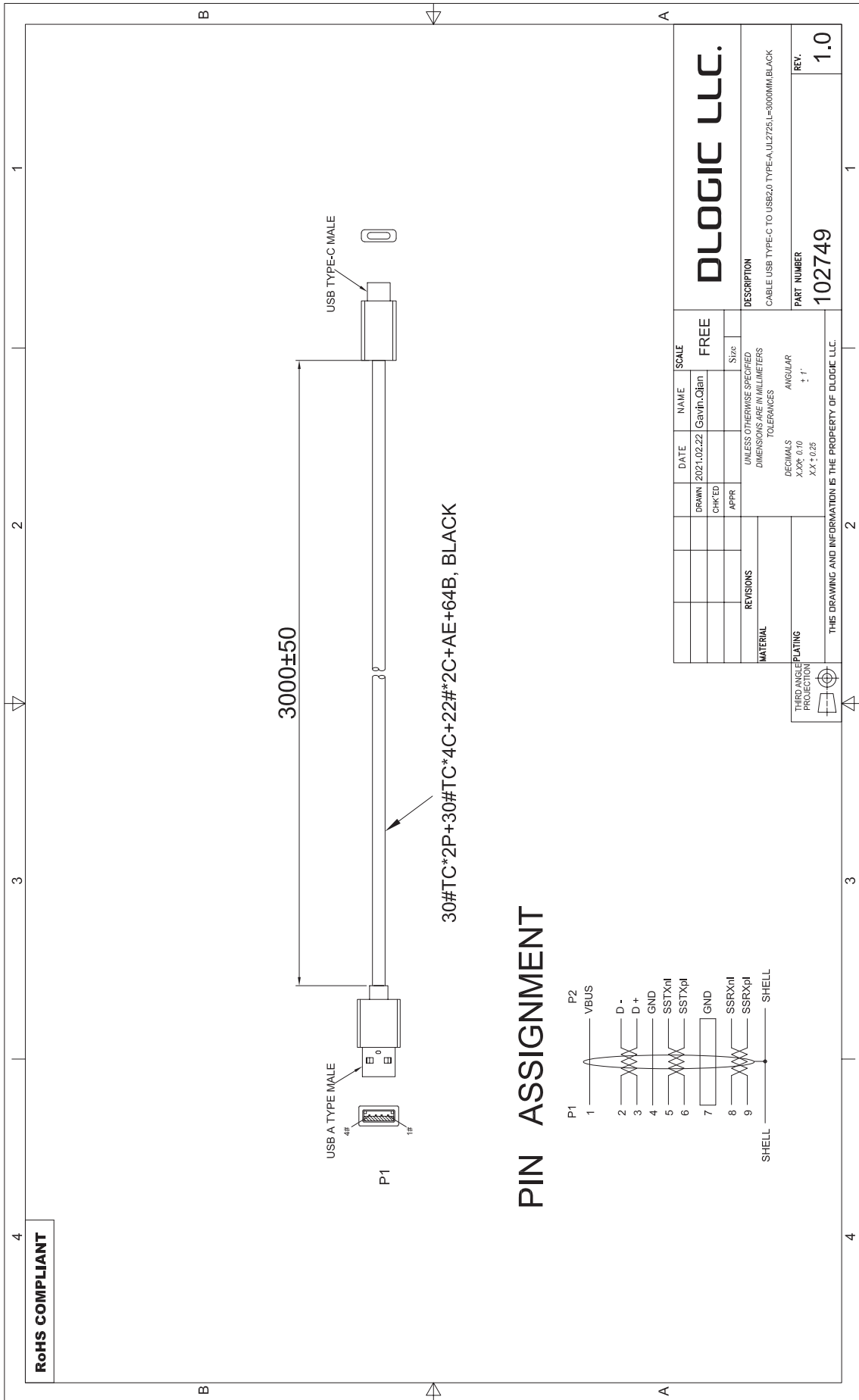
7 Display Port and USB Cable (optional)

Part No:	Description:
102815	CABLE DP ULTRA-HIGH SPEED 8K, L=3000mm BLACK
102749	CABLE USB3.0 TYPE-C to TYPE-A, L=3000mm BLACK
102843	ME POWER SUPPLY AC90-264V C14 DC24.0V 60W DoE-VI IEC62368-1 TINNED-LEADS UL2468 BLACK LF I

7.1 Display Port Cable (optional)



7.2 USB Type-C to Type-A Cable (optional)

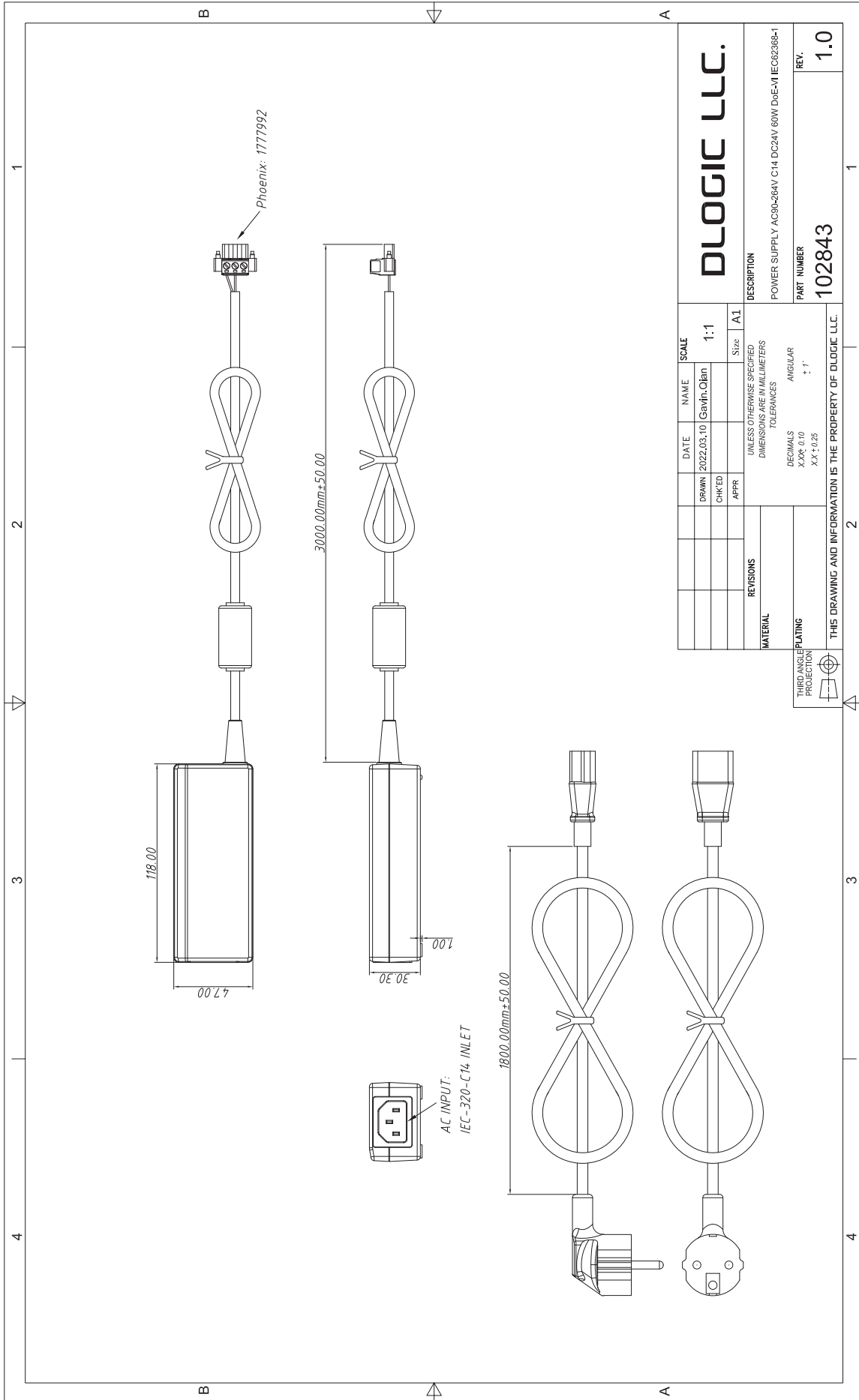


7.3 Industrial Grade 60W Power Supply (optional)

Electrical Characteristics:					
Characteristics	Condition	Min.	Typ.	Max.	Unit
Input Voltage	Safety Approval	100		240	VAC
Input Voltage	80% load	80		275	VAC
Input Frequency	Sine wave	47		63	Hz
Output Power Rating	See Rating Chart			60	W
Over Load Protection	Recovers automatically after fault condition is removed	110		150	%

Environmental:					
Characteristics	Condition	Min.	Typ.	Max.	Unit
Operating Temperature	Derating linearly from 100% load at 40°C to 50% load at 70°C	-20		70	°C
Storage Temperature	0 ~ 95% RH	-40		85	°C
Operating Humidity	Non-condensing	0		95%	RH
Storage Humidity	Non-condensing	0		95%	RH
Mean Time Between Failure	Calculate per MIL-HDBK-217F, Temp: 25°C	100k			h

Certification:		
Type	Standard	Certificate No.
cUL	UL62368-1 and CSA C22.2 No. 62368-1-14	20180410-E183744
CE	CE 2014/30/EU EN55032-2015/A11:2020 Class B EN61000-3-2:2019 EN61000-3-3:2013+A1:2019 EN55035:2017/A11:2020 - IEC61000-4-2 Edition 2.0 2008-12 - IEC61000-4-3 Edition 3.2 2010-04 - iEC61000-4-4 Edition 3.0 2012-04 - IEC61000-4-5 Edition 3.1 2017-08 - IEC61000-4-6 Edition 4.0 2013-10 - IEC61000-4-8 Edition 2.0 2009-09 - IEC61000-4-11 Edition 2.1 2017-05	EC570722-03
CB	IEC62368-1:2014	JPTUV-083897-A1/M1
FCC	47 CFR FCC Rules and Regulations Part 15 Subpart B, Class B Digital Device	FV570722
TUV	EN62368-1:2014+A11 AfPS GS 2014:01 Par.3.1	S 50392967
CCC	GB 17625.1-2012 GB 4943.1-2011 GB/T 9254-2008	2021010907389337
Department of Energy	Level VI, CoC Tier 2	



DLOGIC LLC.		DESCRIPTION	
POWER SUPPLY AC96-264V, C14, DC24V 60W D6EM IEC62368-1		PART NUMBER	
102843		REV. 1.0	
DATE	NAME	SCALE	Size
2022.03.10	Gavin.Ojan	1:1	A1
DRAWN	CHK'D	APPR	REVISIONS
MATERIAL			
UNLESS OTHERWISE SPECIFIED			
DIMENSIONS ARE IN MILLIMETERS			
TOLERANCES			
DECIMALS	ANGULAR		
XX±0.10	± 1'		
XX±0.25			
THIRD ANGLE PROJECTION			
THIS DRAWING AND INFORMATION IS THE PROPERTY OF DLOGIC LLC.			

8 Packaging Specification

8.1 Product Box

Description:	Dimensions (mm)
Product Box	690 x 490mm, H=145mm
Material	Double Wall Cardboard
Color	Brown
Packaged Unit Weight	8.1 kg

8.2 Shipping Box

Description:	Dimensions (mm)
Shipping Carton Size	700x500mm H=320mm
Modules per Carton	2 units
Weight per Shipping Box	18.3 kg

8.3 Shipping Label

Label:	Description:
Size	101mm x 76mm, rounded corners
Material	Paper, self-adhesive
Color	White

8.3.1 Position:



8.3.2 Artwork:

DLOGIC™



Part No. 103385

Desc: DL-DM1850-6U Touch Display Monitor



Qty. 0001

Date: 2022-11-08

Weight: 10.0 kg

To: DLOGIC EU
Schellenberg 8
D-79798 Jestetten, Germany

Tel. +49 7745 2799390

Made in China

9 Quality

9.1 Environmental Conditions

Operating Temperature	-20°C to +70°C The operating temperature refers to the surface temperature of the display.
Storage Temperature	-20°C to +70°C
Humidity range	5% to 95% RH, non-condensing
RoHS Compliance	Compliant with European Union Directive 2011/65/EU and subsequent amendments. Please refer to the DLOGIC RoHS Policy for details.
REACH Declaration	Please refer to the DLOGIC REACH Declaration for details
Phthalate Restriction	Please refer to the DLOGIC Phthalate Restriction Policy for details

9.2 Precautions using Products with LCD Modules

9.2.1 Safety & Health

- Do not attempt to disassemble the display module.
- If the display module is damaged and the liquid crystal substance leaks out, be sure not to get any in your mouth. If the substance contacts your skin or clothes, wash it off using soap and water.
- If the housing is damaged, cracked, or broken, don't connect the power.

9.2.2 Operation Caution

- The touch panel and display panel are made of glass. Do not subject it to mechanical shock.
- Do not apply excessive force to the glass surface or the adjoining areas since this may cause damage.

9.2.3 Cleaning of the Display Module

- If the display module surface is contaminated, breathe on the surface and gently wipe it with a soft dry cloth. If still not completely clear, moisten a cloth with one of the following solvents: Isopropyl alcohol, ethyl alcohol
- Solvents other than those mentioned above may damage the touch panel or display. Especially, do not use the following: Ketone solvents or Aromatic solvents

9.2.4 Storage precautions

- Avoid exposure of the control panel module to direct sunlight or to the light of fluorescent lamps during storage.
- Control panels need to be stored within the storage temperature range.
- If the control panels are stored for a long time, the recommended conditions are:
- Temperature: 0°C ~ 40°C, Relatively humidity: ≤80%
- Control panels should be stored in a room without acid, alkali, and harmful gases.

9.2.5 Transportation Precautions

- Control Panels can't be dropped or exposed to violent shock during transportation. As well as avoid excessive pressure, water, damp environments, and sunshine.

10 Warranty

Unless otherwise agreed between DLOGIC GmbH (DLOGIC) and the customer, DLOGIC will replace or repair any of its products that are found to be functionally defective when inspected in accordance with DLOGIC's acceptance criteria (copies available upon request) for a period of two years from date of shipment. Cosmetic / Visual defects must be returned to DLOGIC within 120 days of shipment. Confirmation of such a date shall be based on freight documents. The warranty liability of DLOGIC is limited to the repair and/or replacement on the terms set forth above. DLOGIC will not be responsible for any subsequent or consequential losses and/or events.

Returning Products under Warranty

No warranty can be granted if the precautions stated above have been disregarded. The typical examples of violations are:

- Broken Glass, Touch Panel or LCD glass
- Display Module was opened or disassembled in any way
- Circuits are modified in any way, including the addition of components

Product repairs will be invoiced to the customer upon mutual agreement. Products must be returned with a sufficient description of the failures and/or defects. Any connectors or cables installed by the customer must be removed completely prior to returning the product.

The product must be returned in the original packaging to avoid any damage during transportation.

11 Intellectual Property, Copyright and Trademark

By reading and using the information in this document from DLOGIC GmbH (DLOGIC) you agree to the following terms. If you do not agree to the following terms, please notice that you are prohibited from using this document and the contents thereof.

The contents of this DLOGIC specification are copyright of DLOGIC and protected by the copyright and other laws of Switzerland, its treaty countries, and other jurisdictions. You are authorized to view, copy, print, and distribute the contents in this document, provided that it is for the purpose of sales of DLOGIC products and to explain the function of DLOGIC products, and that use and reference is made to DLOGIC and all copyright are kept intact and other proprietary notices. Any copies of the content must include DLOGIC's intellectual property, copyright, and trademark notice.

Individual or third-party logos, papers, or documents of DLOGIC may be subject to additional terms indicated by the logos in those documents or pages. Damages or losses arising from using the hardware or software provided by DLOGIC are subject to the terms in the license agreement, and DLOGIC gives no indemnification.

DLOGIC and its Logo is a registered trademark of DLOGIC GmbH, Switzerland.

Other product and company names mentioned herein may be trademarks or trade names of their respective owners. Your access to this document should not be construed as granting, by implication, estoppel or otherwise, any license or right to use any marks appearing in this document without the prior written consent of DLOGIC or the third-party owner thereof.

12 Contact Information

DLOGIC GmbH
Rathausstrasse 14
CH-6341 Baar
Switzerland
Phone: +41 (41) 5880240
Email: info@dlogic.com
Web: <http://www.dlogic.com>

DLOGIC Europe GmbH
Schellenberg 8
DE-79798 Jestetten
Germany
Phone: +49 7745 2799390
Email: eusales@dlogic.com

DLOGIC Ltd.
21D Hong Kong Industrial Building
444 Des Voeux Road West
Western District, Hong Kong
Phone: +852 28186694
Email: info@dlogic.com

DLOGIC Dongguan Co. Ltd.
Room 301, No. 26, Juxiang 2nd Road
Dalang Town, Dongguan City, 523776
Guangdong Province, P.R. China
Email: info@dlogic.com